

The Victorian Backyard
COLLECTION



The Victorian Backyard COLLECTION

Playhouses Children Love!



For over 12 years, we have been building playhouses for children of all ages. Whether it's a sleep over, tea party, or just a little hideout, our playhouses have nurtured child imaginations, and have created a lifetime of memories.

Our Victorian playhouse is the perfect gift for Christmas or birthdays.

Our Victorian playhouses can be insulated and paneled inside for your child's own little home or backyard retreat. The Victorian look also provides interior headroom for adult storage use when the kids are grown! We include a full-size adult door and a small children's dutch door. An optional 46" wide double door is available on sizes 8' x 8' and larger. Front porches are made with white vinyl railings, and floors are cedar stained outdoor wood (2x4 construction).

We Look forward to doing business with you!



VICTORIANS



6' x 8' Victorian A child's dream house!

Shown below with the new raised panel door in the front, gray siding, white trim, gray roof, and red front door and shutters.



VICTORIAN

6' x 8' Victorian

with optional heart window, coach lamps, chimney and deck.

Shown above in pink with white trim and gray roof.



Optional paneled interior



Shown above in cedar tone with green trim and forest green roof. Red chimney and many other options are available. Larger sizes can be made into two rooms for part storage and part play-area. Flower boxes come standard.



8' x 10' Victorian

with optional high walls and Dutch door in front (top opens separately).

Shown above in beige with blue trim, brown roof and red shutters.



BACKYARD CABIN

Our 8' x 12' Backyard Cabin

is the perfect size for a boy or girl. Features 3' built-in porch with white vinyl railing. Madison trim spokes above porch rails are optional. Includes four slider windows with vinyl shutters, one octagon window in loft area, one large adult door in back, one child's door in front, and loft with safety rail and ladder. A children's porch swing for the front porch is also available.

Shown above in buckskin paint, white trim, weathered gray shingles and red shutters. Fancy scalloped trim is also available for no extra charge.

8' x 12' Backyard Cabin

With optional porch swing, coach lamps, chimney, upper porch trim rails and vinyl brick front.

Shown above in blue vinyl siding, white trim, blue shutters and black roof.

Thank you for coordinating my purchase. We were delighted at the quality. It was far better than I expected. It is so nice to know that people are still conscientious about their work, and we will keep you in mind if we need anything else from your collection.

*Regards,
Ann Gunning*



CAPE COD MANSION

Cape Cod Mansion

Shown with porch, porch swing, roof over porch, and two dormers. Also available in other styles without the porch or the dormers. Porch swing is optional.



SCHOOL HOUSE

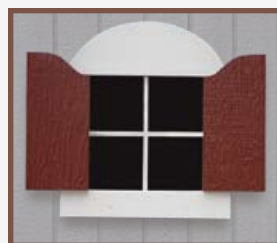
WINDOWS



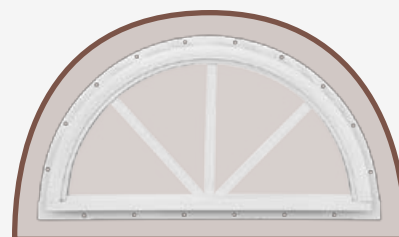
18" x 27"
Slider Window
with Screens



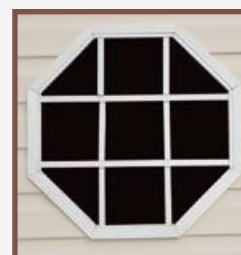
14" x 21"
Slider Window
with Screens



12" x 12"
Fixed Window
with Shutters



Sunburst Window



18" Octagon
Window

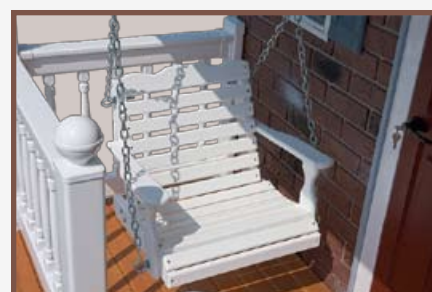
DOORS

Our new playhouse door looks just like a real house door. You can eliminate multiple pinch points by choosing a solid door.

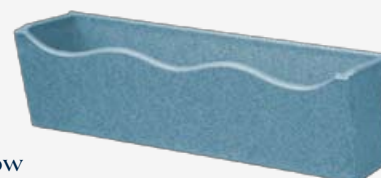


11-Lite Steel House Door

OTHER OPTIONS



Children's White Vinyl Porch Swing
Approximately 24" wide



Window
Flower Box in Vinyl

VENTS



Ridge Vent

Assures maximum life for your shingles by letting the heat escape



4" x 16" Dura-Temp Siding
Gable Vent



8" x 8" Vinyl
Siding
Gable Vent



Playhouse
Chimney



Vinyl Brick Front
Available on any building

Our buildings

are made with maintenance-free vinyl siding or Dura-Temp T1-11 painted with your choice of colors. Our doors and windows are all trimmed with vinyl Perma-trim, which never needs to be painted and will not rot, crack, peel, or warp. The trim is fastened with stainless steel fasteners. Over the years we have developed a building that is practically maintenance-free in both Dura-Temp and vinyl siding. We use a heavy-duty black powder-coated colonial style hinge, which gives the door a nice unique look, and withstands the elements. Additionally, the keyed lock latch on the door gives you maintenance-free security for your yard and garden tools.

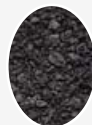
We use
Georgia Pacific
Vinyl Siding
or Dura-Temp
T1-11 with Haley
Exterior Latex
Paint

STANDARD SPECIFICATIONS

Foundation	4" x 4" pressure-treated lumber
Floor Joists	2" x 4" - 16" on center
Flooring	5/8" exterior grade plywood
Wall Studs	2" x 4" or 2" x 3"
Exterior Siding	<ul style="list-style-type: none"> • Wood Dura-Temp with grooves every 4" • Vinyl D4 Dutch Lap • Vinyl Traditional D4
Roof Sheathing	1/2" 4-ply plywood
Roofing	25-year 240 lb. self-sealing asphalt shingles
Doors	Heavy-duty and double framed with 2" x 3" lumber



SHINGLE COLORS



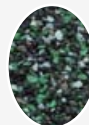
Black



Brown



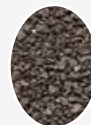
Gray



Forest Green



Tan



Weathered
Gray



White

WOOD SIDING COLORS



Black



Blue



Brown



Buckskin



Cedartone
Sealer



Clay



Cream



Dark Gray



Gray



Green



Pink



Red

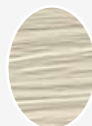


Beige



White

VINYL SIDING COLORS



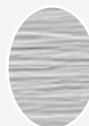
Almond



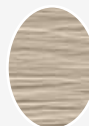
Clay



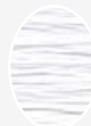
Cream



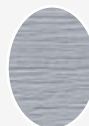
Gray



Tan



White



Blue

VINYL TRIM COLORS



Black



Blue



Brown



Clay



Green



Red



Beige



White